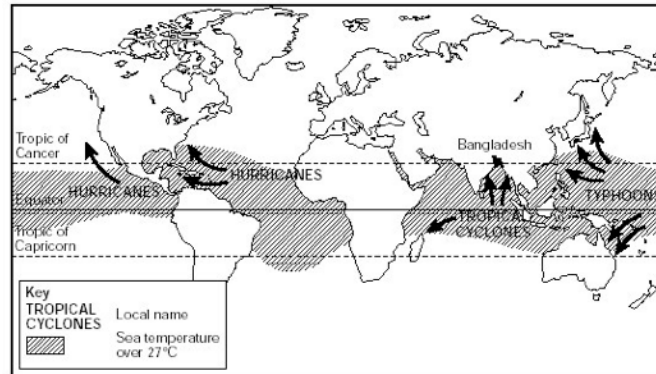


HOW DO WE CREATE A TYPHOON?



What is the difference between a hurricane, typhoon and tropical cyclone?

When do most hurricanes, typhoons and tropical cyclones occur?

<http://www.nhc.noaa.gov/outreach/games/canelab.htm>

How do we create a tropical cyclone/typhoon/hurricane?

Describe what conditions we need for each of the aspects below.

Latitude: _____

Winds: _____

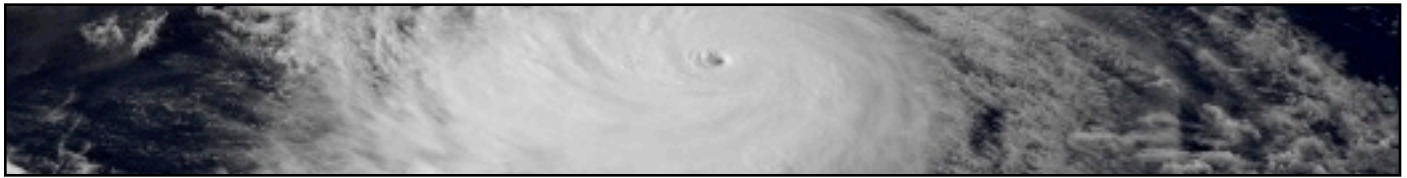
Sea Temperature: _____

Moisture: _____

Anatomy of a typhoon:

Eye
Eye wall
Rain bands
Convection cells





HOW DO WE CREATE A TYPHOON?

Match the vocabulary:

Coriolis effect	*	* the angular distance north or south from the equator of a point on the earth's surface, measured on the meridian of the point.
Altitude	*	* nearly constant easterly winds that dominate most of the tropics and subtropics throughout the world, blowing mainly from the northeast in the Northern Hemisphere, and from the southeast in the Southern Hemisphere.
Latent heat	*	* the height of anything above a given planetary reference plane, especially above sea level on earth.
Latitude	*	* Caused by the rotation of the earth and appearing as a deflection to the right in the Northern Hemisphere and a deflection to the left in the Southern Hemisphere.
Convection	*	* heat absorbed or radiated during a change of phase at constant temperature and pressure.
Wind shear	*	* the vertical transport of atmospheric properties, especially upward
Cumulonimbus	*	* wind velocity changes from point to point in a given direction.
trade winds	*	* a cloud of a class indicative of thunderstorm conditions, characterized by large, dense towers that often reach altitudes

What are the 6 topics that affect the strength of a typhoon? Explain their effects.

<http://www.knowitall.org/nasa/flash/weather/hurricanebasics.swf>

1. _____ : _____
2. _____ : _____
3. _____ : _____
4. _____ : _____
5. _____ : _____
6. _____ : _____